



25 Queen Bess Street Woolloongabba QLD

4 🛏 2 🚿 3 🚗

This home will appeal to many due to the dual living configuration, perfectly suited for multigenerational families, home office use or a teens' retreat.

Conveniently located only 5km to Brisbane City and easy access to public transport, busway and in between Park Rd and Buranda Train stations. PA Hospital is walking distance at only 1.5km. Quality schools include Brisbane South State Secondary College, Villanova College and East Brisbane State School and Catchment for Buranda State School. Quick access to the South East Motorway and South City Square with Woolworths, shops, cafés and restaurants.

Features of the property include:

Upstairs

?3 Bedrooms - Main bedroom with walk in robe, built in

Price : \$1295pw. LEASED by our Premium Leasing Team

View : <https://www.positionone.com.au/lease/qld/inner-south/woolloongabba/residential/house/8035899>

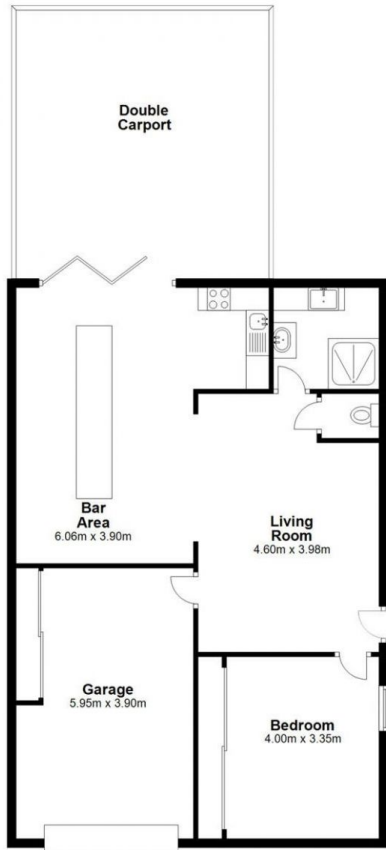


Yashmin Innes
07 3843 4511

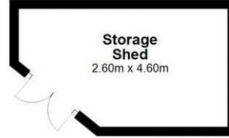


Allanah Wright
07 3843 4511

Ground Floor



(NOT IN POSITION)



First Floor



25 Queen Bess Street, Woolloongabba

This floorplan is not to scale and is for illustration purposes only. Areas and dimensions are approximate.

4 2 3

Internal Approx. 200.0 sqm
 External Approx. 75.0 sqm
 Total Approx. 275.0 sqm

