





### 15 Clyde Street Petrie Terrace QLD

3  2  5 

This beautiful Queenslander is right in the heart of the city, this home is close to everything. Just a few minutes walk to Petrie Terrace Barracks shopping centre, the Grammar Schools, Roma Street Parklands, the Caxton Street entertainment precinct, the Normanby Hotel and Suncorp Stadium.

The features of this home are:-

- - Panoramic views
- - Off street parking for 5 cars
- - 3 large bedrooms
- - 3 metre high ceilings
- - Wrap-around verandahs on three sides
- - Large north-facing entertainer's courtyard
- - Extensive cottage gardens and mature Jacaranda tree

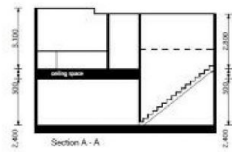
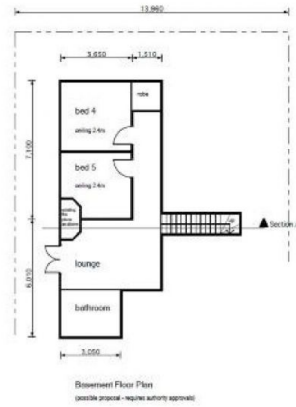
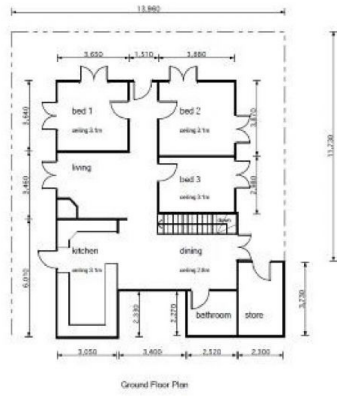
**Type** : House

**View** : <https://www.positionone.com.au/lease/qld/city-north/petrie-terrace/residential/house/8089571>



**Nadine Gatehouse**  
07 3843 4511

[For full version visit the website](#)



15 Clyde Street,  
Brisbane QLD  
4000

Note:  
 1) These drawings are for general information only.  
 2) Any proposal must be consistent to local authorities for consideration/approval.